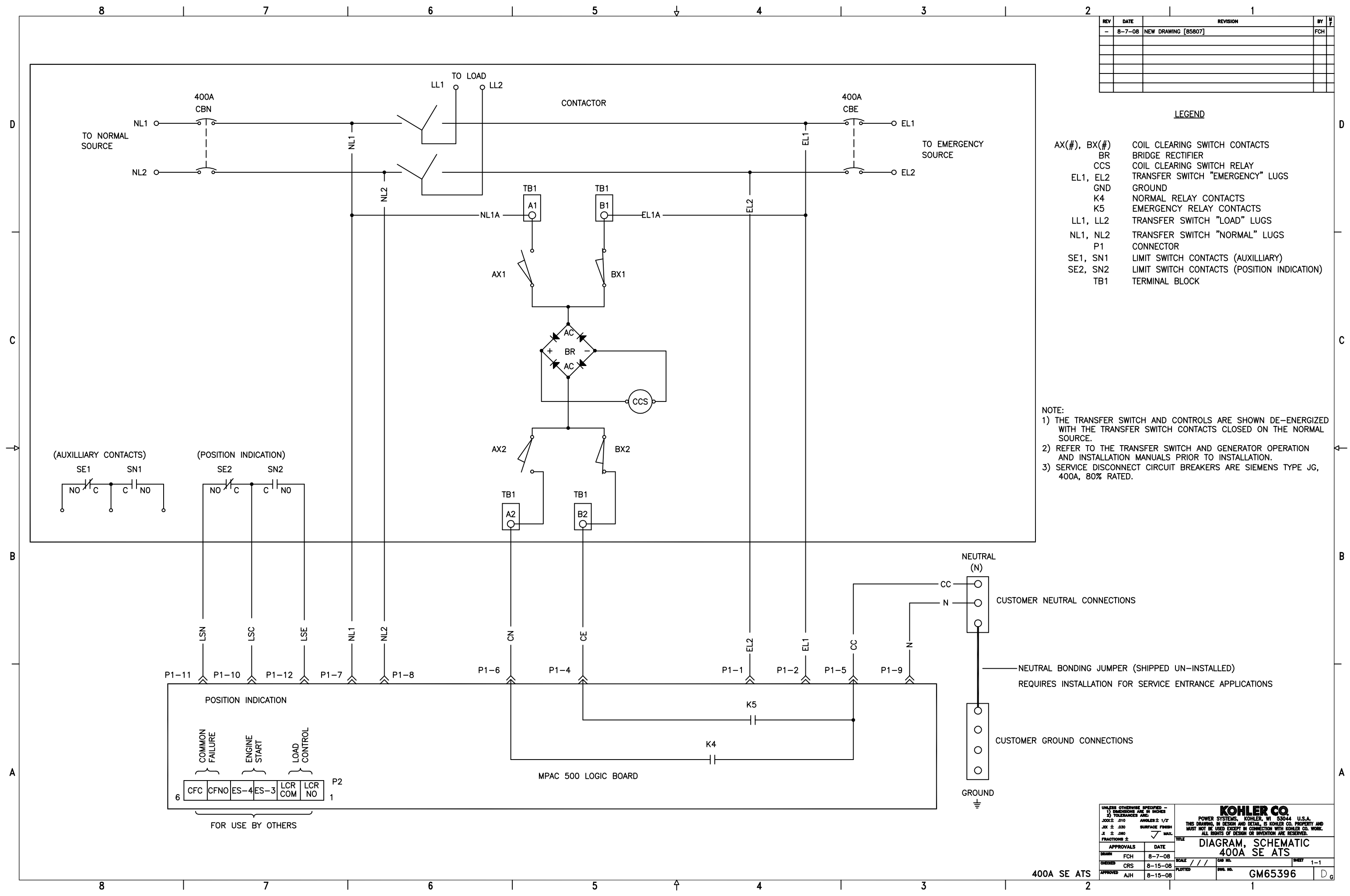


REV	DATE	REVISION	BY	CHK
-	8-7-08	NEW DRAWING [85807]	FCH	

LEGEND

- AX(#), BX(#) COIL CLEARING SWITCH CONTACTS
- BR BRIDGE RECTIFIER
- CCS COIL CLEARING SWITCH RELAY
- EL1, EL2 TRANSFER SWITCH "EMERGENCY" LUGS
- GND GROUND
- K4 NORMAL RELAY CONTACTS
- K5 EMERGENCY RELAY CONTACTS
- LL1, LL2 TRANSFER SWITCH "LOAD" LUGS
- NL1, NL2 TRANSFER SWITCH "NORMAL" LUGS
- P1 CONNECTOR
- SE1, SN1 LIMIT SWITCH CONTACTS (AUXILLIARY)
- SE2, SN2 LIMIT SWITCH CONTACTS (POSITION INDICATION)
- TB1 TERMINAL BLOCK

- NOTE:**
- 1) THE TRANSFER SWITCH AND CONTROLS ARE SHOWN DE-ENERGIZED WITH THE TRANSFER SWITCH CONTACTS CLOSED ON THE NORMAL SOURCE.
 - 2) REFER TO THE TRANSFER SWITCH AND GENERATOR OPERATION AND INSTALLATION MANUALS PRIOR TO INSTALLATION.
 - 3) SERVICE DISCONNECT CIRCUIT BREAKERS ARE SIEMENS TYPE JG, 400A, 80% RATED.



UNLESS OTHERWISE SPECIFIED -
 1) DIMENSIONS ARE IN INCHES
 2) TOLERANCES ARE:
 DECIMALS .010 ANGLES 1/2°
 FRACTIONS ± SURFACE FINISH: ✓ MAX.

KOHLER CO.
 POWER SYSTEMS, KOHLER, WI 53044 U.S.A.
 THIS DRAWING, IN DESIGN AND DETAIL, IS KOHLER CO. PROPERTY AND MUST NOT BE USED EXCEPT IN CONNECTION WITH KOHLER CO. WORK. ALL RIGHTS OF DESIGN OR INVENTION ARE RESERVED.

DIAGRAM, SCHEMATIC
400A SE ATS

APPROVALS	DATE	SCALE	SHEET
DRAWN FCH	8-7-08	SCALE ///	1-1
CHECKED CRS	8-15-08	PLOTTED	
APPROVED AJH	8-15-08		

400A SE ATS **GM65396** **D**